

LESSON 1

Copy the rhythms, noting stem direction. Count and clap, then speak each rhythm on takadimi.

1

1 & 2 & 3 & 4 & 1 2 3 4 1 - 2 3 - 4 1 - 2 - 3 - 4
 ta di ta di ta di ta di ta ta ta ta ta - a ta - a ta - a - a - a

2


1 2 3 - 4 1 2 3 & 4 &
 ta ta ta - 4 ta ta ta di ta di


3


Challenge


Challenge! Create your own rhythm below. (Hint: Choose one rhythm exercise above. Copy one full measure at a time onto the staff below, but in a different order.)


Identify the solfege syllables as *do, re, mi, fa, sol, la, or ti*. Sing each exercise on solfege.
 Hint: Later you will learn key signatures, but for now a triangle locates *do*.

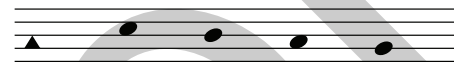
1 
 do re _ _

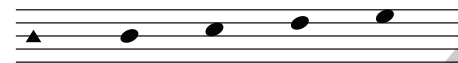
7 
 _ _ _ _

2 
 _ _ _ _


8 
 _ _ _ _


3 
 _ _ _ _

9 
 _ _ _ _


4 
 _ _ _ _

10 
 _ _ _ _


5 
 _ _ _ _

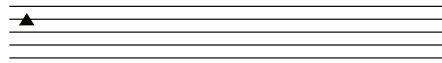
11 
 _ _ _ _

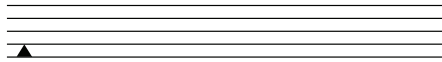
6 
 _ _ _ _


12 
 _ _ _ _

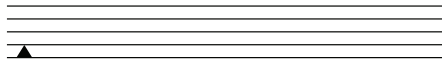
Write the noteheads on the staff as indicated by the solfege syllables.


13 
do re mi re

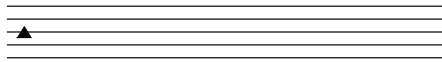
19 
do re mi re

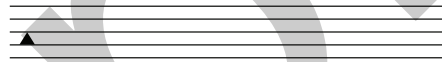
14 
do re do ti

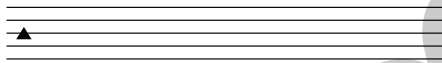
20 
do ti la sol

15 
do ti la ti

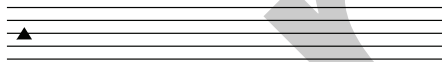
21 
mi re mi fa

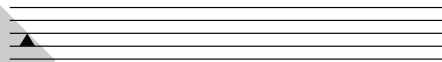
16 
do re mi fa

22 
do re do ti

17 
mi re do re

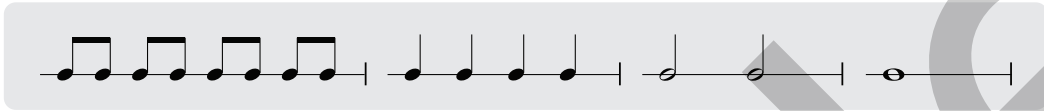
23 
mi fa sol la

18 
do ti la sol

24 
mi re mi fa

Rhythm Dictation

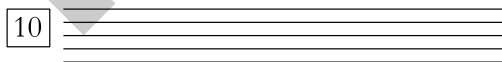
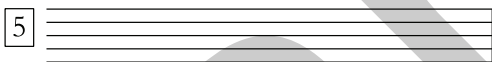
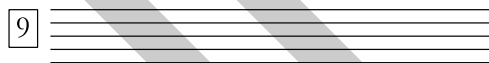
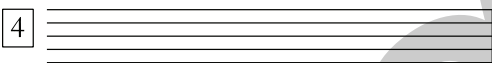
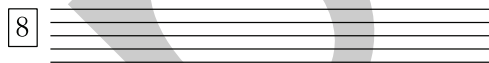
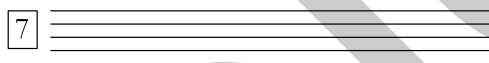
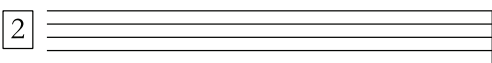
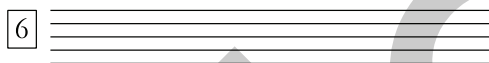
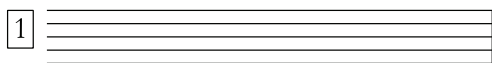
Listen to rhythm patterns from your teacher. Repeat each pattern aloud or silently using takadimi or counting syllables. Using the rhythm patterns in the note bank below, notate the correct pattern for each exercise. (Hint: only one rhythm pattern will be used in each exercise.)



<p>1 _____</p> <p>2 _____</p> <p>3 _____</p> <p>4 _____</p>	<p>6 _____</p> <p>7 _____</p> <p>8 _____</p> <p>9 _____</p>
---	---

Pitch Dictation

Draw a triangle on the line or space that represents *do*. Listen to each four-note tonal pattern. Repeat the pattern aloud or silently using solfege. Notate the correct pattern for each exercise.



LESSON 6


Fill in the missing information.


time signature	How many beats in each measure?	Draw the beat note.	time signature	How many beats in each measure?	Draw the beat note.
6/8			6/4		
9/8			9/4		
12/8			12/4		

Write in the compound time signature appropriate to each rhythm excerpt. Count and clap, then speak each rhythm on takadimi.

1 

2 


3 

4 

5 

6 

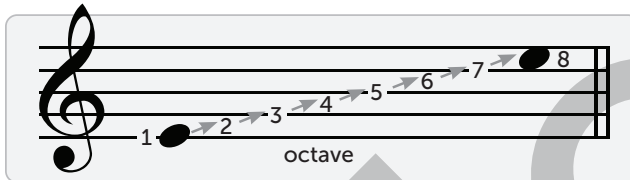
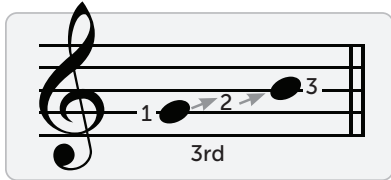
7 

8 

9 

Copyright © 2023 Shenandoah Christian Music Camp. Original purchaser may photocopy for educational purposes. To purchase visit www.musiccamp.info.

The size of an interval is measured by counting the lines and spaces between two notes, inclusive of both notes. These interval quantities are usually spoken (and sometimes written) using ordinal numbers such as 3rd and 5th. However, an interval of a 1st is called a *unison*, and an 8th is called an *octave*.



Identify the quantity of each melodic interval as shown in the example.

10 _____

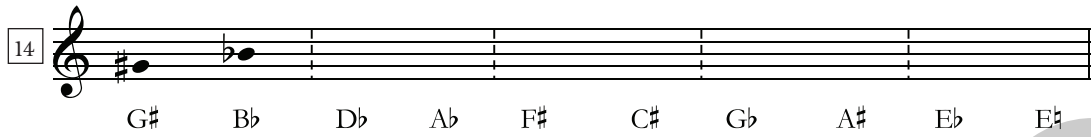
11 _____

Identify the quantity of each harmonic interval as shown in the example.

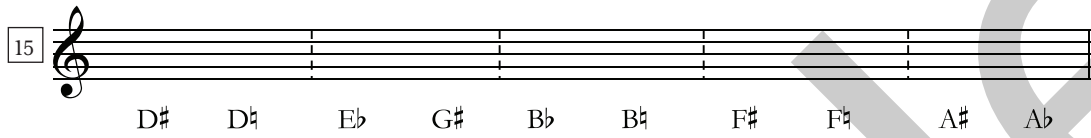
12 _____

13 _____

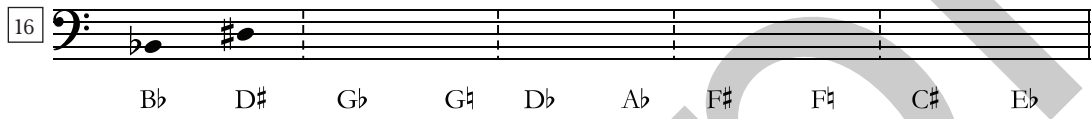
Write noteheads on the staff at the pitch indicated. Use sharps, flats, or naturals as needed.

14 

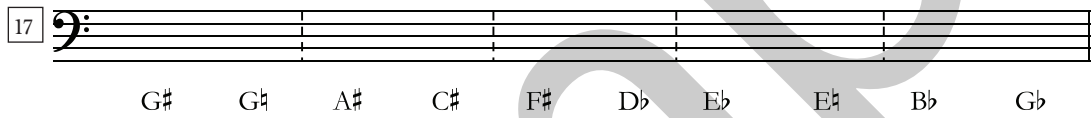
G# B \flat D \flat A \flat F# C# G \flat A# E \flat E#

15 

D# D E \flat G# B \flat B F# F A# A \flat

16 

B \flat D# G \flat G D \flat A \flat F# F C# E \flat

17 

G# G A# C# F# D \flat E \flat E B \flat G \flat

Write a notehead a half step above the given pitch but using the same line or space. Identify the letter name of each pitch.

18
 G \flat G \sharp _____

19

20
 D \flat D \sharp _____

21

Write a notehead a half step below the given pitch but using the same line or space. Identify the letter name of each pitch.

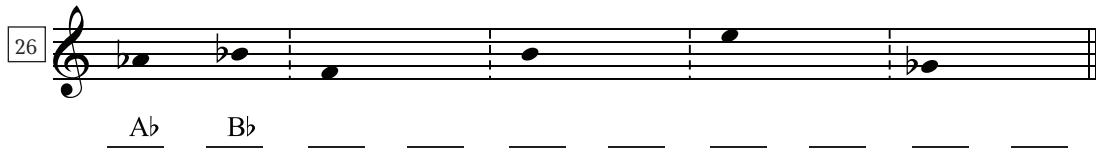
22
 A A \flat _____

23

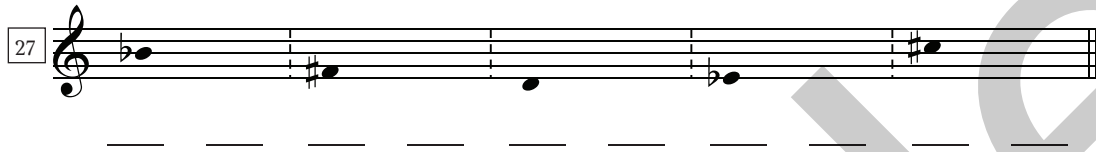
24
 C \sharp C \sharp _____

25

Write a notehead a whole step *above* the given pitch. Identify the letter name of each pitch.

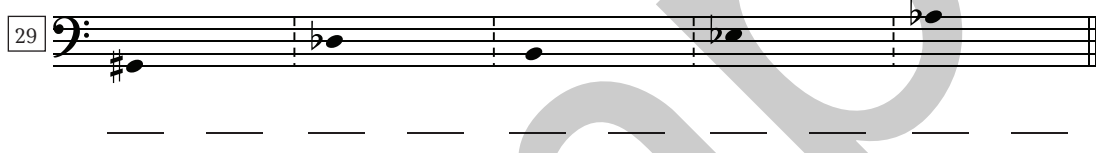
26 

Ab Bb _____

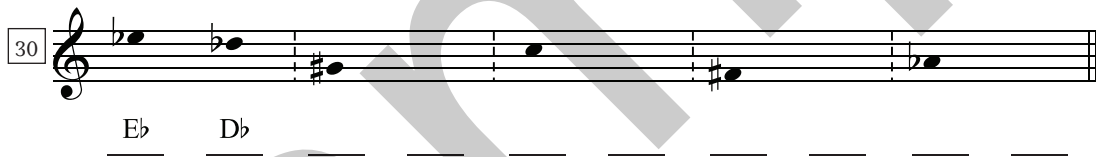
27 

28 

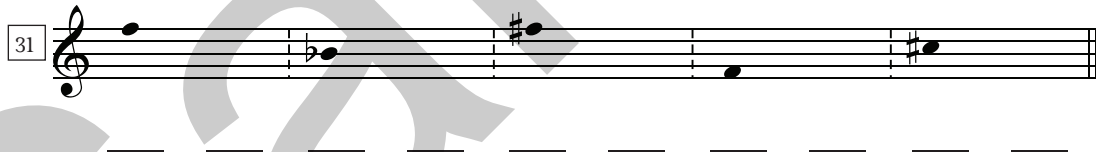
C# D# _____

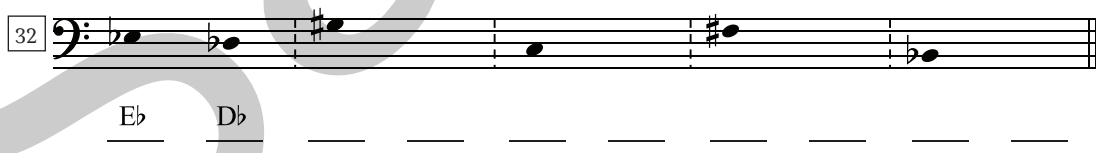
29 

Write a notehead a whole step *below* the given pitch. Identify the letter name of each pitch.

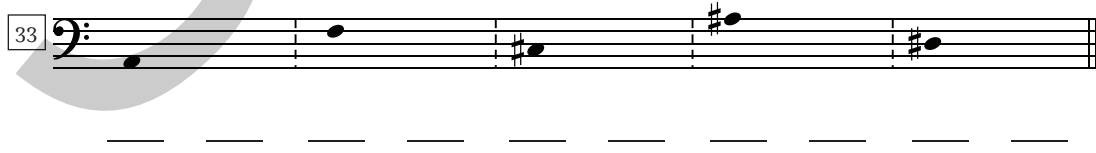
30 

Eb Db _____

31 

32 

Eb Db _____

33 

Rhythm Dictation

Listen to rhythm patterns from your teacher. Repeat each pattern aloud or silently using takadimi or counting syllables. Using the rhythms in the note bank below, notate the correct pattern for each exercise. Watch the time signature carefully.



1 $\frac{6}{8}$ _____

2 $\frac{9}{8}$ _____

3 $\frac{12}{8}$ _____

4 $\frac{6}{8}$ _____

5 $\frac{9}{8}$ _____



6 $\frac{6}{4}$ _____

7 $\frac{9}{4}$ _____

8 $\frac{12}{4}$ _____

9 $\frac{6}{4}$ _____

10 $\frac{9}{4}$ _____

Pitch Dictation

Draw a triangle on the line or space that represents *do*. Listen to each four-note tonal pattern. Repeat the pattern aloud or silently using solfege. Notate the correct pattern for each exercise.

